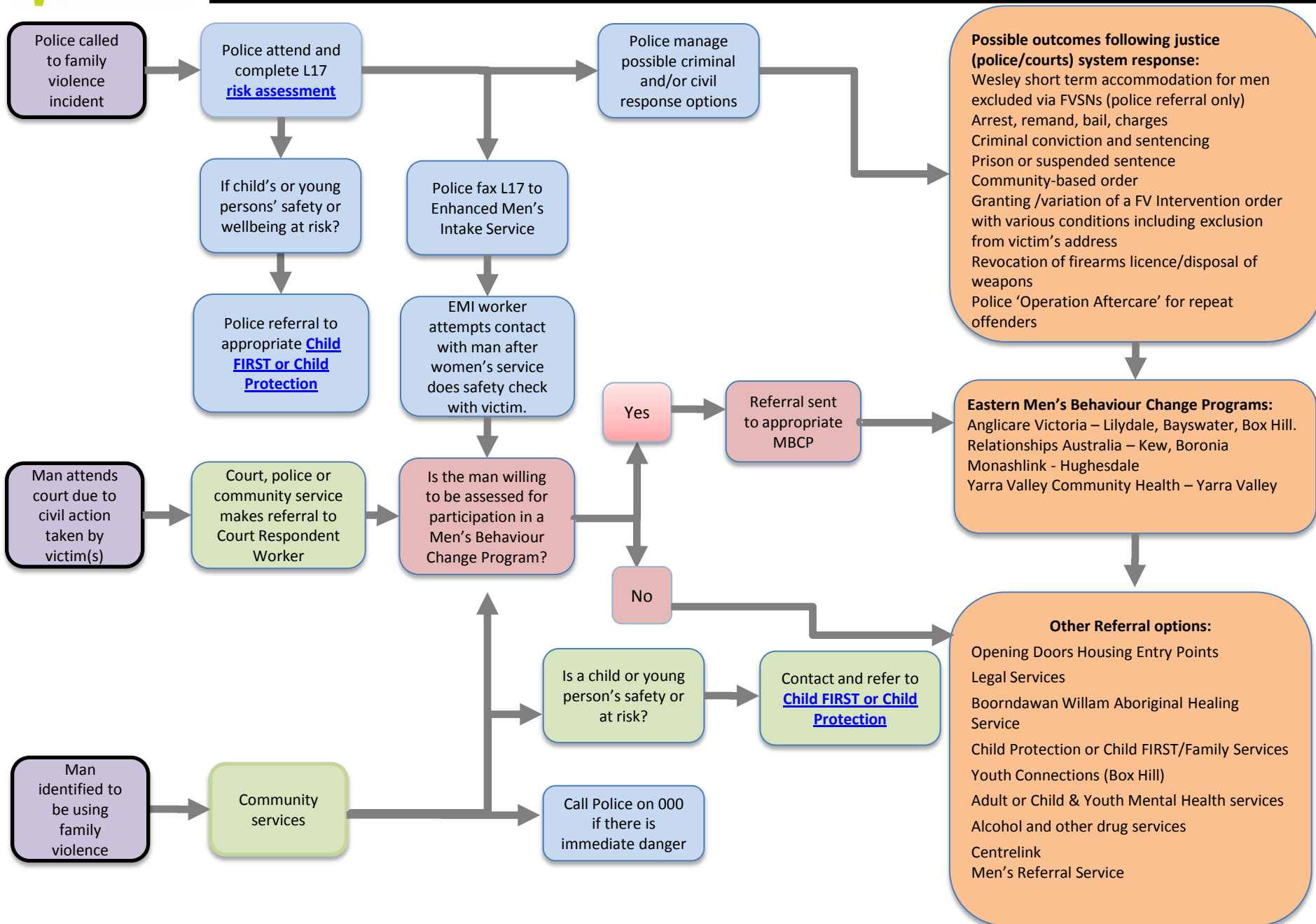


Family Violence system referral pathways for men who use violence in Eastern Metropolitan Region



Guide to the flowchart

Important information:

Call police on 000 if there is immediate danger to a victim of family violence.

Women's Domestic Violence Crisis Service (state wide) call 1 800 015 188, 24 hrs 7 days per week

Men's Referral Service (state wide) call 1 800 065 973, 9am to 9pm, Monday to Friday

Sexual Assault Crisis Line (state wide) call 1 800 806 292, 24 hrs 7 days per week

After Hours Child Protection Emergency Services (state wide) call 131 278

Resources in the flowchart	Where to find more information:
<p>Family Violence Common Risk Assessment Framework (aka CRAF)</p>	<p>Information and resources about the CRAF can be found on the Department of Human Services website. This includes information about the Preliminary and Comprehensive risk assessments. http://www.dhs.vic.gov.au/for-service-providers/workforce,-careers-and-training/workforce-training/child,-youth-and-family-services-workforce/family-violence-and-risk-assessment,-and-risk-management-training</p> <p>Please note: The <i>Preliminary risk assessment</i> is intended for use by service providers where family violence response is not their core business. The assessment assists with immediate safety planning and referrals for specialist family violence support. The <i>Comprehensive risk assessment</i> is intended for use by specialist family violence services for detailed safety planning and case management responses.</p>
<p>Victoria Police L17 Risk Assessment</p>	<p>Information about the L17 can be found in the Victoria Police Code of Practice for the Investigation of Family Violence (2nd Edition). http://www.police.vic.gov.au/content.asp?Document_ID=288</p>
<p>Child FIRST or Child Protection Referrals</p>	<p>Information about when and how to make referrals to either Child FIRST or Child Protection Services can be found on the Department of Human Services website. http://www.dhs.vic.gov.au/_data/assets/pdf_file/0003/582591/flowchart-mandatory-reporting-27-5-10.pdf</p>
<p>No To Violence Guidelines</p>	<p>No To Violence is the peak body for men's behavior change programs in the state. This code of practice guides best practice service provision for these services and can be found on the NTV website. http://ntv.org.au/pages/men-s-behaviour-change/standards-of-practice.php</p>